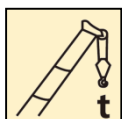


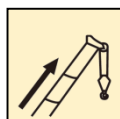
XCT70_S 汽车面起重机 / Truck Crane

技术规格书

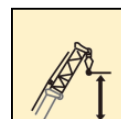
Technical specifications



70t



44.5m



60.3m

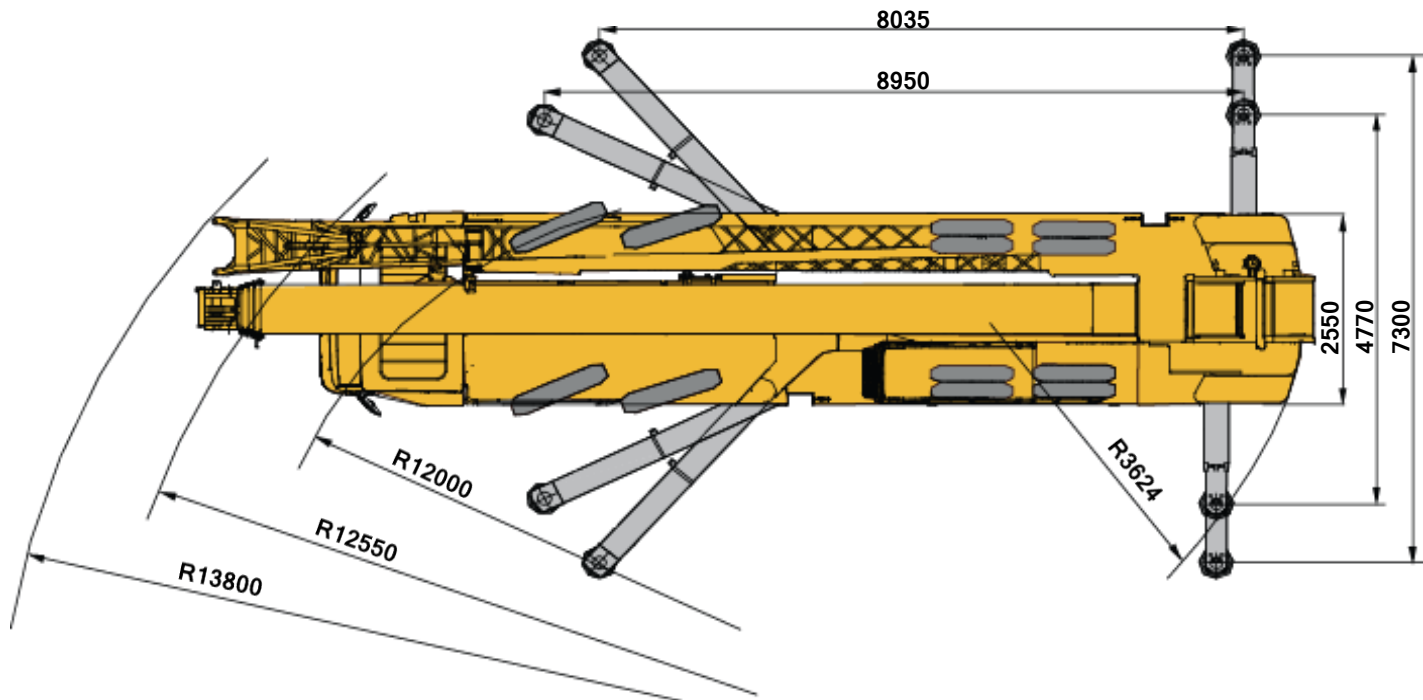
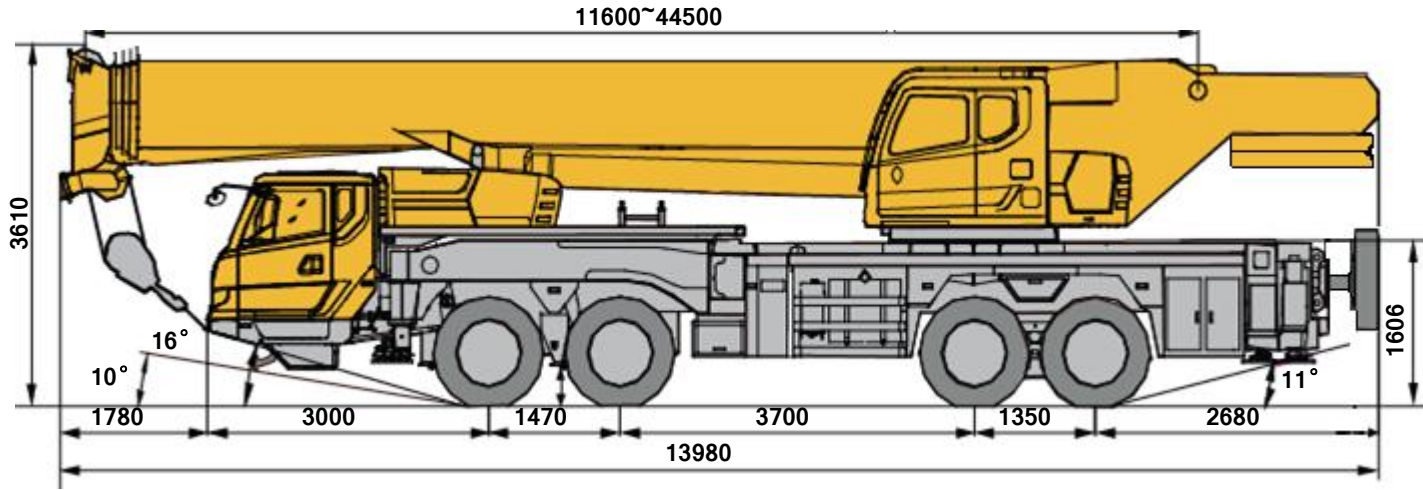


目录

Content

目录	
Content	
尺寸参数	3
Dimensions	
技术规格	4-7
Product Specifications	
重量/作业速度	8
Weight / Working speeds	
平衡重	9
Counterweight	
臂架组合方案	10
Boom / Jib combinations	
主臂	11-14
Boom	
副臂	15-16
Jib	
符号标识	17
Description of symbols	
主要技术参数表	18-19
Transportation plan	
主要配套件明细表	20-21
Main parts list	
注意事项	22
Notes	


尺寸参数 Dimensions



技术规格

Technical specifications

	底盘
车架	徐工设计、制造，全覆盖式走台板，防扭箱型结构，高强度钢材制造。
支腿	4支腿，K形布置，后活动支腿采用双级水平支腿，水平伸缩和垂直伸缩由液压控制，底盘两侧装有支腿操纵机构，水平仪、照明灯和调速按钮，支腿油缸均设有单向阀，且垂直支腿带有双向液压锁。 支脚盘尺寸：Φ450mm 最大起重量时支腿反力：580KN
发动机	MC11.36-50，直列六缸水冷电控柴油发动机，中国重汽制造，额定功率268kW/1900rpm，最大扭矩1800Nm/1000-1400rpm，欧V排放标准。 燃油箱容积：300L。
变速箱	陕齿手动变速箱，10个前进档，2个倒档。
车桥	徐州美驰高强度车桥，1、2桥转向，3、4桥驱动。
悬挂	前悬挂为钢板弹簧，后悬挂为橡胶悬挂。
轮胎	12个轮胎，1个备胎，1、2桥均装单胎，3、4桥均装双胎。 轮胎规格：315/80R22.5
制动	行车制动：双回路气压制动，作用于所有车轮。 驻车制动：弹簧储能制动，作用于3、4轴车轮。 辅助制动：发动机排气制动和缸内缓速制动。
转向	1、2桥机械转向+液压助力。
驾驶室	豪华驾驶室，乘员2人，配置GLONASS紧急呼叫装置，电动升降器的安全玻璃、可调式座椅、电动调节后视镜、可调节高度及角度方向盘、收音机等。2公斤灭火器。 标配冷暖空调。
电气系统	直流24伏特，串联12伏特的电池组2个。 发电机：28伏特-80安培。

	上车
结构	徐工设计、制造，高强度钢材制造。
液压系统	发动机驱动变量柱塞泵，用于起升、变幅、伸缩，驱动齿轮泵用于回转； 负载敏感式比例多路换向阀； 风冷式液压油散热器； 液压油箱容积：1000L。
操纵方式	液控先导操纵系统，由左右2个操纵手柄控制，由液压泵和比例阀进行液压先导式控制起重机的全部动作。
主起升机构	液压控制调速，装有双折线绳槽卷筒，由液压马达通过行星齿轮减速器驱动，内置常闭式制动器并带有平衡阀；
副起升机构	液压控制调速，装有双折线绳槽卷筒，由液压马达通过行星齿轮减速器驱动，内置常闭式制动器并带有平衡阀。
回转机构	四点接触球式回转支承，由液压马达驱动行星齿轮回转机构减速器驱动，可连续回转360°；具有动力控制或自由回转的功能，可无级调速。
变幅机构	单缸前支变幅，带有平衡阀。
操纵室	新型钢制操纵室，装有无视野死角的前景窗，安全玻璃，车窗装有遮阳板，推拉式车门，座椅靠背可倾斜定位，操纵杆安装在座椅两侧的扶手台上；带推拉踏板；前窗顶窗装有雨刮器；标配冷暖空调；2kg灭火器
安全装置	液压平衡阀；液压溢流阀；液压双向锁；力矩限制器；三圈保护器，防止钢丝绳过放；臂头设置高度限位，防止钢丝绳过卷；三色报警灯
组合配重	总重6.5t，有5.2t、6.5t两种组合方式。

技术规格

Technical specifications



臂架系统

主臂	5节，“U”形截面的筒形焊接结构。双缸绳排伸缩机构 主臂长度：11.6m~44.5m。
臂端单滑轮	单滑轮，安装在主臂顶端用于单股钢丝绳起重作业，起重性能与主臂相同，但最大起重量不超过5t
固定副臂	2节桁架式焊接结构，具有0°、15°、30°三种固定副臂安装角 固定副臂长度：9.2m/16m

选装配置

安全装置	风速仪；上车水平仪；倒车影像；驾驶室顶部警示灯；上装EAC认证功能：包括虚拟墙、低温报警、高压报警功能。
平衡重	平衡重：3t

产品各部件明细如上所述，具体部件明细请参照产品报价单

技术规格

Technical specifications



Chassis

Frame	Designed and manufactured by XCMG, with all covered walking surface, anti-torsion box structure and optimal load-bearing structure design, made of high strength steel.
Outrigger	4 outriggers, K-shaped arrangement, rear lateral outrigger are two stage , lateral and vertical outrigger controlled by the hydraulic control. Both sides of the chassis equipped with outrigger operating system, lighting and speed buttons; outrigger cylinders equipped with one-way valve, and the vertical outrigger has two-way hydraulic lock. Scale of outrigger float:Φ450 Most force on outrigger:580KN.
Engine	MC11.36-50, in-line six-cylinder water-cooled EFI diesel engine, manufactured by CNHTC, rated power 268kW /1900rpm, max torque 1800Nm / 1000-1400rpm, Euro V emission standards. Fuel tank capacity : 300L
Gearbox	Mechanical transmission manufactured by Fast, with 10 forw-ard gears and 2 reverse gears available
Alxes	High strength axle with reliable performance, manufactured by xuzhou Meritor,1&2 alxes sreering,3&4 alxes driving.
Suspension	Front suspension is steel spring,rear suspension is rubber spring.
Tires	12 tires and 1 spare tire, 1&2 axles are equipped with single tire,3&4 axles are equipped with double tire. Tire specifications:315/80R22.5
Brakes	Service brake: double-circuit air pressure brake, acting on all wheels. Parking brake: spring energy brake, acting on wheels of 3&4 axles. Auxiliary brake: engine retarded brake,
Steer	1&2 alxes sreering, mechanical steer with hydraulic assist
Cab	Luxurious cab, two passengers are allowable. Equipped with GLONASS device、 electronic control glass,seat can be adjusted, electronic control mirror and radio, 2 kilograms fire extinguisher. Cold-warm air-condition is equipped.
Electric	24V(DC),2 battery in series. Generator:24V,80A



Superstructure

Frame	Designed and manufactured by XCMG; made of high-strength steel
Hydraulic system	The variable plunger pump driven by engine is used to control hoisting, elevating and telescoping; and the gear pump is used for slewing operations. Load sensitive proportional multi-way change valve, Air-cooled hydraulic oil radiator; Volume of hydraulic oil tank: 1000L
Operating mode	Hydraulic pilot control of all crane movements using two control levers. All crane movements are controlled by hydraulic pump and proportional valve.
Main winch system	Hydraulic controlled speed regulation, groove drum is equipped, driven by hydraulic motor through planetary gear reducer, and built-in normally closed brake and counterbalance valve are available.
Auxiliary winch system	Hydraulic controlled speed regulation, groove drum is equipped, driven by hydraulic motor through planetary gear reducer, and built-in normally closed brake and counterbalance valve are available.
Slewing system	Single-row four-point contact ball type with external slewing ring, planetary gear slewing reducer is driven by hydraulic motor which can slew 360° continuously. It has functions of power control or free slewing and stepless speed regulation is available.
Elevating System	A single-cylinder with balance valve equipped is used for front support elevation.
Operator's cab	New fully-enclosed steel tiltable cab with a full-view front window. Safety glass and sun shield are used for windows. Wipers are fitted for the windshield and roof window. The cab features a new ergonomic seat design with backrest adjustment and armrests with joysticks fitted. A sliding door and a pull-out step are available. Air conditioner are available. Fire extinguisher 2kg
Safety devices	Hydraulic balance valve; Hydraulic relief valve; Double-way hydraulic valve; LMI; spring aligning device for joystick; Lowering limiter for preventing wire rope from over-releasing; Anti-two block at boom head for preventing wire rope from over-winding; tri-color warning lamp.
Combined counterweight	Total weight is 6.5 t. Counterweight configurations: 5.2 t, 6.5 t

技术规格

Technical specifications



Boom system

Boom	5-section, U-shape cross section, welding structure. Double-cylinder plus ropes telescoping system is designed to extend/retract the boom. Boom length:11.6m ~ 44.5m.
Boom Single top	Boom single top is installed on the top of boom and used for lifting operation of single line wire rope. The lifting performance of boom single top is the same with boom, but max. load capacity cannot exceed 5000kg.
Jib	It is stowed beside the boom, consisted of a connecting bracket, a rotating bracket and two lattice bi-fold jibs with jib offset angle: 0° ,15° ,30 Jib length 9.2m/16m.

Additional equipment

Safety devices	Anemometer, level gauge , backup camera , caution lamp, Functions for EAC certificate, including virtual wall, low temperature warning and high voltage warning functions .
Counterweight	The optional weight is 3 t.

Product parts details As mentioned above, please refer to the product quotation for specific parts.

重量 Weight



车桥 Axle	1	2	3	4	总重量 Total weight
t	9	9	13	13	44



吊钩 Hook	倍率 No. of lines	吊钩重量 Weight kg	吊钩尺寸 Dimensions mm	备注 Remarks
70t	13	550	504×562×1480	单钩 Double hook , 标配 Standard
35t	8	360	430×504×1362	单钩 Single hook , 选配 Optional
5t	1	100	300×300×535	单钩 Single hook , 标配 Standard

作业速度 Working speeds



315/80 R 22.5



2.5 ~ 80

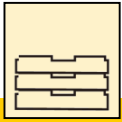
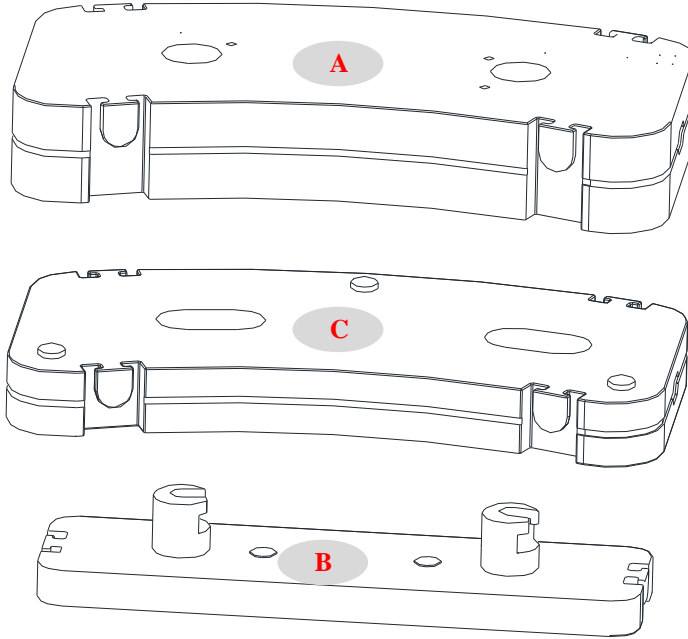


45%



作业机构 Drive	作业速度 Working speed	最大单绳拉力 Max. single line pull	钢丝绳直径/长度 Rope diameter/ length
	0-130 m/min , 单绳 , 第四层 m/min, single line, 4th layer	52kN	18mm/208m
	0-130 m/min , 单绳 , 第四层 m/min, single line, 4th layer	52 kN	18mm/140m
	0-2 r/min		
	从-1°抬起至80°约40s Approx. 40s for boom elevation from -1° to 80°		
	从11.6m伸出至44.5m约80s Approx. 80s for boom extension from 11.6m to 44.5m		

平衡重 Counterweight

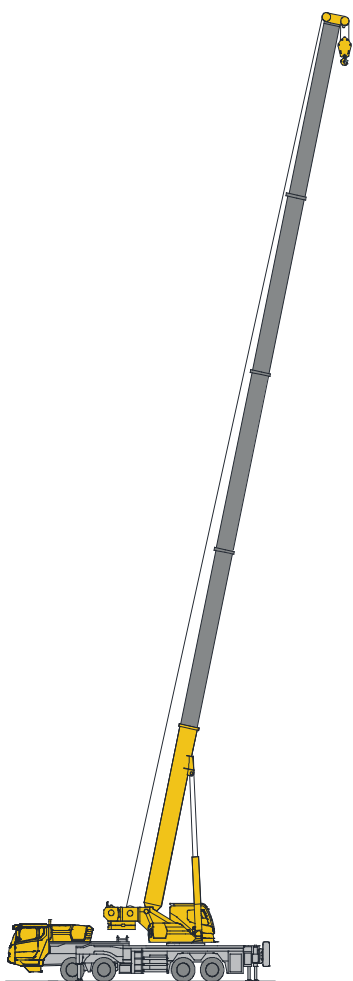


平衡重 Counterweight	A	B	C
尺寸 (长×宽×高) m Size (L×W×H) m	372×1282×2400	355×600×2200	278×1282×2400
重量 t Weight t	5.2	1.3	3

工况模式 Working mode	9.5t	6.5t
组合形式 Combinations	A+B+C	A+B

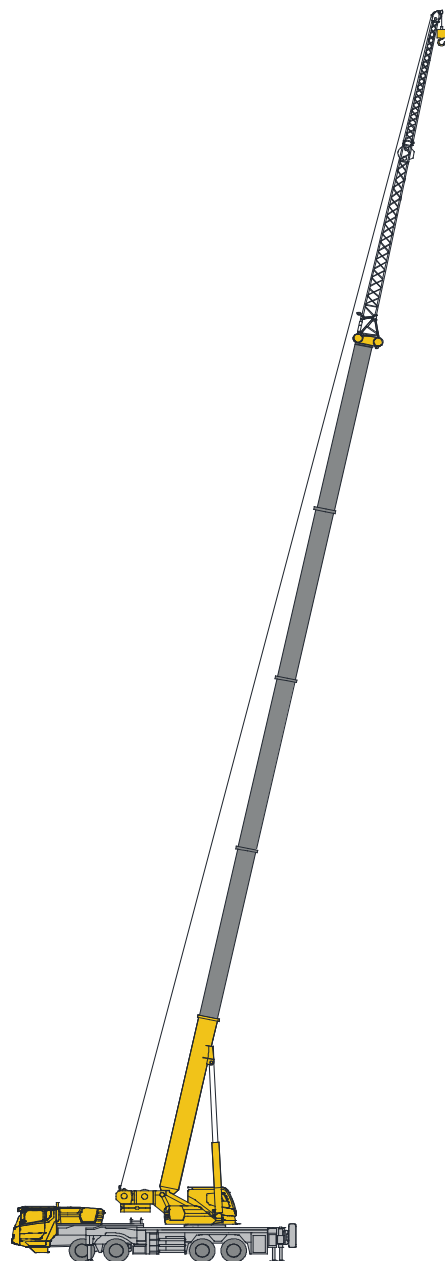
臂架组合方案

Boom / Jib combinations



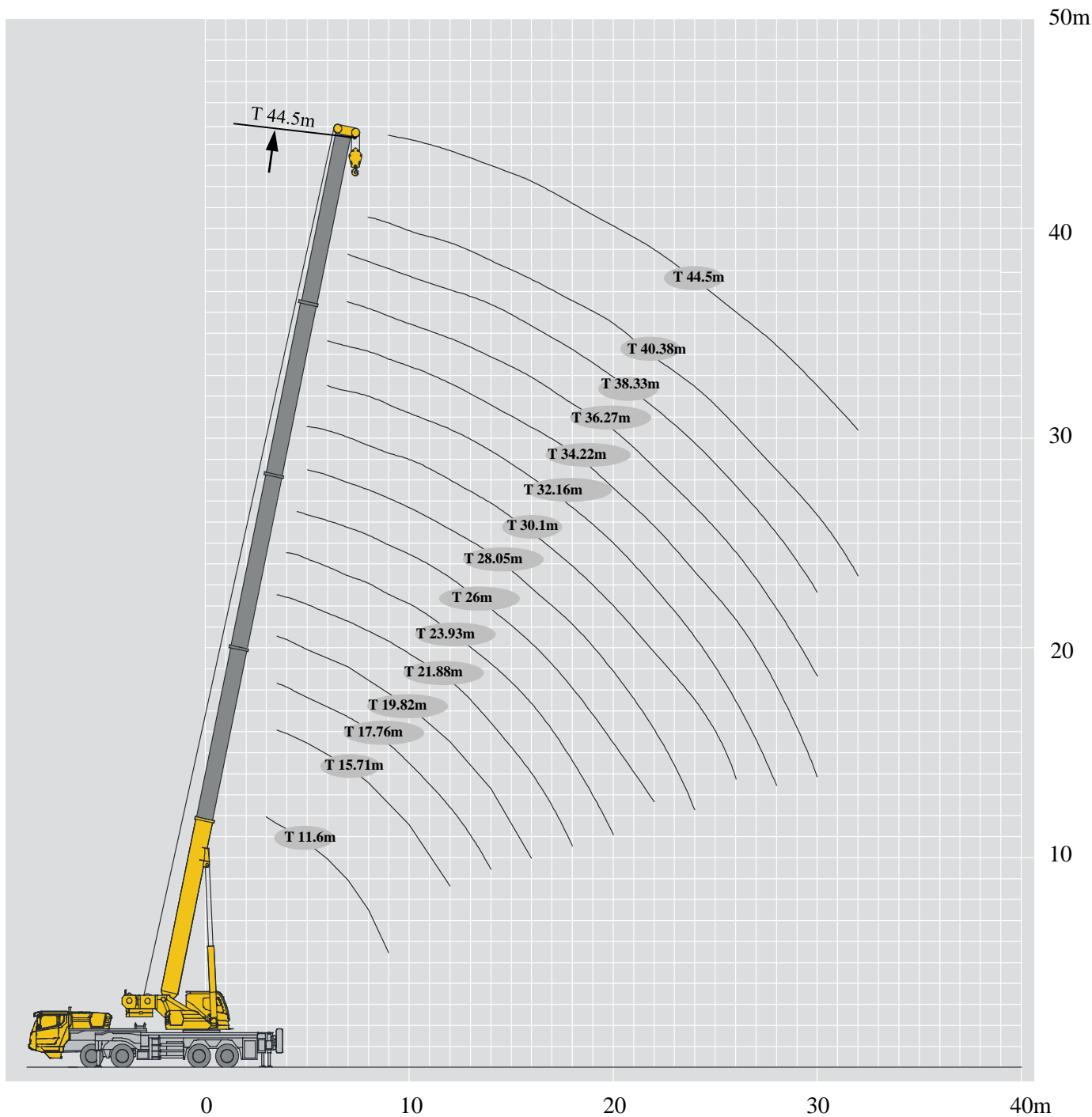
主臂
Telescopic boom

T : 11.6~44.5m



副臂
Jib


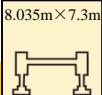

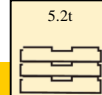
T : 44.5m
J : 9.2/16 m



起重性能表

Lifting capacities



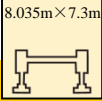

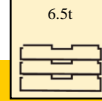

T 11.6~44.5m

	   																
	11.6m	15.71m	19.82m	26m	32.16m	38.33m	44.5m	17.76m	23.93m	30.1m	36.27m	21.88m	28.05 m	34.22	40.38m		
2	70																
3	60															3	
3.5	51.5	45	35					27				27				3.5	
4	48	45	35					27	24			27				4	
4.5	45	43	33.5	27				27	24			27				4.5	
5	41.5	41	32	27				27	24	18.6		27	24			5	
6	33.8	33.8	29	24.5	19.3			27	22	17.3		27	22	15.9		6	
7	27.6	27.6	25.9	22.2	19.3	14.3		26	20.6	15.8	11.5	26	20.8	15.9		7	
8	22.8	22.3	22	20	18.3	14.3		23.5	19.1	14.6	11.5	23.5	19.3	14.9	10.1	8	
9	18.1	17.7	17.4	18	17	13.6	9.8	19.7	17.3	13.5	11	19.1	17.5	13.9	10.1	9	
10		14.4	14.1	15.3	15.8	12.8	9.8	16.4	15.5	12.3	10.3	15.8	16	12.9	9.9	10	
12		10	9.7	10.8	11.5	11.5	9.1	11.9	12.5	10.7	9.1	11.3	12	11.4	8.8	12	
14			6.8	7.9	8.5	8.9	8.3	8.8	9.5	9.4	8	8.3	9	9.4	7.9	14	
16			5	6.1	6.5	6.9	7.2		7.5	7.7	7	6.3	6.9	7.3	7.1	16	
18				4.6	5.1	5.4	5.7		6	6.2	6.2	4.8	5.4	5.8	6.1	18	
20				3.5	3.9	4.3	4.6		5	5.1	5.3		4.3	4.6	4.9	20	
22				2.55	3.1	3.45	3.7			4.2	4.4		3.4	3.8	4	22	
24					2.45	2.7	3			3.5	3.7		2.7	3.1	3.3	24	
26					1.8	2.2	2.4			2.9	3.1			2.5	2.7	26	
28					1.3	1.7	1.9				2.6			2	2.2	28	
30						1.3	1.5				2.2			1.6	1.8	30	
32							1.2								1.4	32	

起重性能表

Lifting capacities


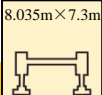

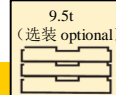
T 11.6~44.5m

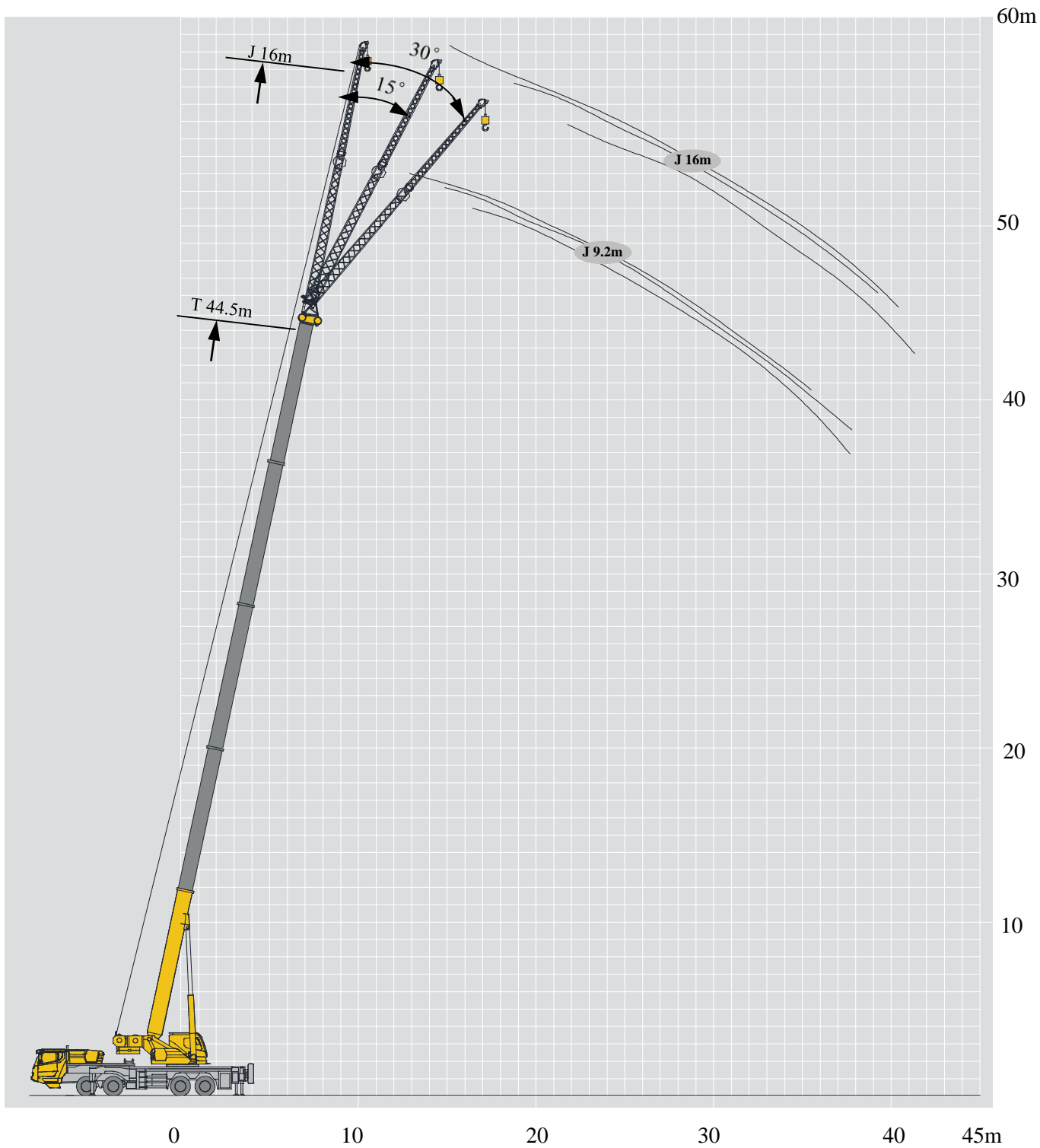
																	
	11.6m	15.71m	19.82m	26m	32.16m	38.33m	44.5m	17.76m	23.93m	30.1m	36.27m	21.88m	28.05 m	34.22m	40.38m		
2	70																
3	60																3
3.5	51.5	45	35						27			27					3.5
4	48	45	35						27	24		27					4
4.5	45	43	33.5	27					27	24		27					4.5
5	41.5	41	32	27					27	24	18.6	27	24				5
6	33.8	33.8	29	24.5	19.3				27	22	17.3	27	22	15.9			6
7	27.6	27.6	25.9	22.2	19.3	14.3			27	20.6	15.8	11.5	26	20.8	15.9		7
8	23.9	23.5	23.3	20	18.3	14.3			25	19.1	14.6	11.5	23.5	19.3	14.9	10.1	8
9	19	18.8	18.5	18	17	13.6	9.8	20.8	17.3	13.5	11	20.1	17.5	13.9	10.1		9
10		15.3	15.1	16.2	15.8	12.8	9.8	17.2	15.5	12.3	10.3	16.6	16	12.9	9.9		10
12		10.8	10.5	11.6	12.2	11.5	9.1	12.5	13.2	10.7	9.1	12	12.6	11.4	8.8		12
14			7.5	8.6	9.2	9.6	8.3	9.5	10.1	9.4	8	8.9	9.6	10	7.9		14
16			5.4	6.5	7	7.5	7.6		7.9	8.3	7	6.8	7.4	7.8	7.1		16
18				5	5.5	5.9	6.2		6.4	6.7	6.2	5.3	5.9	6.3	6.4		18
20				3.8	4.4	4.7	5		5.2	5.5	5.6		4.7	5.1	5.3		20
22				2.8	3.4	3.8	4.1			4.5	4.8		3.8	4.1	4.4		22
24					2.7	3.1	3.4			3.8	4		3	3.4	3.6		24
26					2.1	2.5	2.8			3.2	3.4			2.8	3		26
28					1.6	2	2.2				2.9			2.2	2.5		28
30						1.5	1.8				2.4			1.8	2		30
32							1.4								1.7		32

起重性能表

Lifting capacities

T 11.6~44.5m

	   																
	11.6m	15.71m	19.82m	26m	32.16m	38.33m	44.5m	17.76m	23.93m	30.1m	36.27m	21.88m	28.05 m	34.22m	40.38m		
2	70																
3	60																
3.5	51.5	45	35					27				27					
4	48	45	35					27	24			27					
4.5	45	43	33.5	27				27	24			27					
5	41.5	41	32	27				27	24	18.6		27	24				
6	33.8	33.8	29	24.5	19.3			27	22	17.3		27	22	15.9			
7	27.6	27.6	27.6	22.8	19.3	14.3		26	20.6	15.8	11.5	26	20.8	15.9			
8	26.3	25.9	25.5	20.9	18.3	14.3		25	19.1	14.6	11.5	25	19.3	14.9	10.1		
9	21.3	20.8	20.4	19	17	13.6	9.8	22.9	17.3	13.5	11	22.2	17.5	13.9	10.1		
10		17.2	16.8	17.9	15.8	12.8	9.8	19	15.5	12.3	10.3	18.5	16	12.9	9.9		
12		12.2	11.9	12.9	13.5	11.5	9.1	13.9	14.6	10.7	9.1	13.4	14.1	11.4	8.8		
14			8.8	9.8	10.3	10.6	8.3	10.7	11.3	9.4	8	10.2	10.8	10	7.9		
16			6.6	7.6	8.1	8.5	7.6		9	8.3	7	8	8.6	8.9	7.1		
18				5.9	6.5	6.8	7		7.4	7.5	6.2	6.3	6.9	7.3	6.4		
20				4.6	5.2	5.5	5.8		6	6.4	5.6		5.6	5.9	5.7		
22				3.6	4.2	4.5	4.8			5.3	5.2		4.6	4.9	5.2		
24					3.4	3.8	4			4.5	4.6		3.7	4.1	4.3		
26					2.7	3.1	3.3			3.8	4			3.4	3.7		
28					2.2	2.5	2.8				3.4			2.9	3.1		
30						2.1	2.3				3			2.4	2.6		
32							1.9								2.2		



起重性能表

Lifting capacities

T 44.5m

	44.5m		9.2m/16m		8.035m×7.3m		360°		5.2t				
	9.2m						16m						
	0°		15°		30°		0°		15°			30°	
78	5	3.3	2.5	3	2	1.4	78						
75	4.7	3.1	2.4	2.8	1.8	1.3	75						
72	4.5	3	2.3	2.6	1.6	1.2	72						
70	3.9	2.7	2.2	2.5	1.5	1.2	70						
65	3	2.5	1.9	2.2	1.3	1.1	65						
60	1.9	1.7	1.6	1.6	1.2	1	60						
55	1.1	1	1	0.9	0.8	0.8	55						
50	0.6	0.5	0.5	0.5	0.5	0.5	50						

	44.5m		9.2m/16m		8.035m×7.3m		360°		6.5t				
	9.2m						16m						
	0°		15°		30°		0°		15°			30°	
78	5	3.3	2.5	3	2	1.4	78						
75	4.7	3.1	2.4	2.8	1.8	1.3	75						
72	4.5	3	2.3	2.6	1.6	1.2	72						
70	3.9	2.7	2.2	2.5	1.5	1.2	70						
65	3.3	2.5	1.9	2.2	1.3	1.1	65						
60	2.1	2	1.8	1.8	1.2	1	60						
55	1.3	1.2	1.2	1.1	1.0	0.8	55						
50	0.8	0.7	0.7	0.6	0.6	0.5	50						

	44.5m		9.2m/16m		8.035m×7.3m		360°		9.5t (选装 optional)				
	9.2m						16m						
	0°		15°		30°		0°		15°			30°	
78	5	3.3	2.5	3	2	1.4	78						
75	4.7	3.1	2.4	2.8	1.8	1.3	75						
72	4.5	3	2.3	2.6	1.6	1.2	72						
70	3.9	2.7	2.2	2.5	1.5	1.2	70						
65	3.7	2.5	1.95	2.2	1.3	1.1	65						
60	2.7	2.1	1.8	2	1.2	1	60						
55	1.8	1.6	1.6	1.6	1.1	0.8	55						
50	1.2	1.1	1.1	1	0.9	0.6	50						

符号标识

Description of symbols

常规标识

General symbols

	上车 Superstructure		底盘 Chassis
	起重能力 lifting capacity		车桥 Axle
	吊臂长度 Boom length		行驶速度 Driving speed
	工作幅度 Radius		爬坡能力 Gradability
	吊臂仰角 Boom position		轮胎 Tires
	主臂起升高度 Hoist height with Boom		支腿 Outriggers
	固定副臂长度 Fixed jib length		吊钩 Hook block
	副臂安装角 Jib offset angle		平衡重 Counterweight
	副臂起升高度 Hoist height with jib		卷扬 Winch
	360°全回转 360° rotation		

主要技术参数表

Transportation plan

类别 Category	项目 Item	单位 Unit	参数 Parameter	
尺寸参数 Dimensions	外形尺寸 (长×宽×高) Outline size (length×width×height)	mm	13980×2550×3610	
	轴距 Wheel base	mm	1470+3700+1350	
	轮距 (前/后) Track (Front/ Rear)	mm	2124/2124/1834/1834	
	前悬/后悬 Front/ Rear overhang	mm	3000/2680	
	前伸/后伸 Front/ Rear extension	mm	1780/0	
重量参数 Weight	最大允许总质量 Total weight in travel configuration	kg	44000	
	最大允许总质量下携带部件 Parts permissible on board	—	主钩、副钩、副臂、副卷、6.5t平衡重	
	轴荷	一轴 1st axle	kg	9000
		二轴 2nd axle	kg	9000
		三轴 3rd axle	kg	13000
四轴 4th axle		kg	13000	
动力参数 Power	发动机型号 Engine model	—	MC11.36-50	
	额定功率/转速 Engine rated power/rpm	kW/(r/min)	268/1900	
	最大净功率/转速 Max. net power/rpm	kW/(r/min)	265/1900	
	最大输出扭矩/转速 Engine rated torque/rpm	N.m/(r/min)	1800/1000-1400	
行驶参数 Travel	最高车速 Max. travel speed	km/h	≥80	
	最低稳定车速 Min. travel speed	km/h	2.5 ~ 3	
	最小转弯直径 Min. turning diameter	m	≤24	
	臂头最小转弯直径 Min. turning diameter at boom tip	m	≤27.6	
	最小离地间隙 Min. ground clearance	mm	303.5	
	接近角 Approach angle	°	10	
	离去角 Departure angle	°	11	
	制动距离 (制动初速度为30km/h) Braking distance (at 30 km/h)	m	≤10	
	最大爬坡能力 Max. grade ability	%	≥45	
	百公里油耗 Fuel consumption per 100 km	L	35	
噪音 Noise	加速行驶机外噪声 Exterior noise level	dB(A)	≤80	
	驾驶员耳旁噪声 Noise level at seated position	dB(A)	≤80	

主要技术参数表

Transportation plan

类别 Category	项目 Item		单位 Unit	参数 Parameter	
主要性能参数 Main performance	最大额定总起重量 Max. total rated lifting capacity		t	70	
	最小额定工作幅度 Min. rated working radius		m	2	
	转台尾部回转半径 Turning radius at turntable tail	平衡重处 Counterweight	mm	3625	
		副卷处 Auxiliary winch	mm	3845	
	最大起重力矩 Max. load moment	基本臂 Base boom	kN.m	2033	
		最长主臂 Fully-extended boom	kN.m	1223	
		最长主臂+副臂 Fully-extended boom + Jib	kN.m	802	
	支腿跨距 Outrigger span	纵向 Longitudinal	m	8.035	
		横向 Lateral	m	7.3	
	起升高度 Hoist height	基本臂 Base boom	m	11.9	
		最长主臂 Fully-extended boom	m	44.5	
		最长主臂+副臂 Fully-extended boom + Jib	m	60.3	
	起重臂长度 Boom length	基本臂 Base boom	m	11.6	
		最长主臂 Fully-extended boom	m	44.5	
		最长主臂+副臂 Fully-extended boom + Jib	m	60.5	
副臂安装角 Jib offset angle		°	0、15、30		
工作速度参数 Working speed	起重臂起臂时间 Boom raising time		s	≤40	
	起重臂全伸时间 Boom fully extended time		s	≤80	
	最大回转速度 Max. slewing speed		r/min	≥2	
	支腿收放时间 Outrigger extending and retracting time	水平支腿 Outrigger beam	收 Retracting	s	≤15
			放 Extending	s	≤20
		垂直支腿 Outrigger jack	收 Retracting	s	≤25
			放 Extending	s	≤35
起升速度 (单绳,第四层,空载) Hoisting speed (single line, 4th layer, no load)	主起升机构 Main winch		m/min	≥130	
	副起升机构 Auxiliary winch		m/min	≥130	
噪声 Noise	机外辐射 Exterior noise level		dB (A)	≤124	
	司机位置处 Noise level at seated position		dB (A)	≤90	

主要配套件明细表

Main parts list

序号 N0.	名称 Name	型号 Model	厂家 Manufacturer
1	下车发动机 Chassis engine	MC11.36-50	中国重型汽车集团 China National Heavy Duty Truck Group Co.,LTD
2	变速箱 Transmission	10JSD160TB	陕西法士特齿轮有限责任公司 Shanxi Fast Gear Co.,LTD
3	转向器 Steering gear	GX120C-06 NT12086C-3411001	江门市兴江转向器有限公司 Jiangmen Xingjiang Steering Gear Co., LTD. 南通环球转向器制造有限公司 Nantong Huanqiu Steering Gear Manufacture Co., LTD
5	车桥 Axle	16JYQ-X131LA 16JYQ-X131M 16TMRF-D222KN 16MRF-D222KPA	徐州美驰车桥有限公司 Xuzhou Meritor Axle Co.,LTD.
6	轮胎 Tire	315/80 R22.5	双钱轮胎股份有限公司 Double Coin Holdings Co.,LTD.
7	下车液压油泵 Chassis hydraulic pump	L10V100+L10V100-AZ 1163132274A	中航力源液压股份有限公司 AVIC Liyuan Hydraulic Co. , LTD 泊姆克(天津)液压有限公司 Permco (Tianjin) Hydraulic Inc. , LTD
8	回转支承 Slewing bearing	011.60.1487.101.04.03F1 QWA1487.60Z	徐州罗特艾德回转支承有限公司 Xuzhou RotheErde Slewing Bearing Co., Ltd 马鞍山方圆回转支承股份有限公司 Ma'anshanFangyuan slewing Limited by Share Ltd
9	主/副起升马达 Main and auxiliary winch motor	A2FM107/61W-VZB020 GA2FM107/61W-VZB020	上海博士力士乐液压及自动化有限公司 Shanghai Bosch Rexroth Hydraulic & Automation Ltd. 中航力源液压股份有限公司 ZhonghangLiyuan Hydraulic Limited by Share Ltd. 浙江圣邦科技有限公司 Zhejiang Sunbun Technology Co., Ltd. 北京华德液压工业集团有限责任公司液压泵分公司 Beijing Huade Hydraulic Industry Group Co., Ltd. Huade Hydraulic Pump Branch Company
10	主/副起升减速机 Main and auxiliary winch reducer	JQ160.40 QJB260.40	徐州圣邦机械有限公司 Xuzhou Shengbang Mechinery Co., Ltd. 青岛海力达齿轮箱有限公司 Qingdao Hailida gear box Co., Ltd.
11	主/副起升钢丝绳 Main and auxiliary winch rope	18NAT4V×39S+5FC1960	江苏狼山钢绳股份有限公司 Jiangsu Langshan wire Rope Co., Ltd. 巨力索具股份有限公司 China Juli Sling Co., Ltd.
12	回转马达 Slewing motor	A2F80W2Z2	中航力源液压股份有限公司 ZhonghangLiyuan Hydraulic Limited by Share Ltd. 浙江圣邦科技有限公司 Zhejiang Sunbun Technology Co., Ltd. 北京华德液压工业集团有限责任公司液压泵分公司 Beijing Huade Hydraulic Industry Group Co., Ltd. Huade Hydraulic Pump Branch Company
13	回转减速机 Slewing reducer	JH100.45 HJB170.45A	徐州圣邦机械有限公司 Xuzhou Shengbang Mechinery Co., Ltd. 青岛海力达齿轮箱有限公司 Qingdao Hailida gear box Co., Ltd.

主要配套件明细表

Main parts list

序号 N0.	名称 Name	型号 Model	厂家 Manufacturer
14	变幅油缸 Elevating cylinder	XCT55.28	徐州徐工液压件有限公司 Xuzhou Hydraulic Parts Co., Ltd. XCMG 成都成缸液压设备制造有限公司 Chengdu Hydraulic Cylinder Co., Ltd.
15	伸缩油缸 Telescoping cylinder	XCT55.16	徐州徐工液压件有限公司 Xuzhou Hydraulic Parts Co., Ltd. XCMG 成都成缸液压设备制造有限公司 Chengdu Hydraulic Cylinder Co., Ltd.
16	力矩限制器 Load moment limiter	HC4900	徐州赫思曼电子有限公司 Xuzhou Hirschmann Electronics Co., Ltd.
17	先导手柄 Pilot lever	C-RCX-24206、HC-RCX- 24205 181420342、181420343	意大利HYDRAULIC CONTRAL (先导操纵) Italy Hydraulic Control
18	主臂板材 Boom steel plate	Q800E	宝钢 BAOSTEEL
19	整车液压系统管接头 Pipe connection in hydraulic system of whole vehicle	—	建湖特佳液压件有限公司 Jianhu Tejia Hydraulic parts Co., Ltd. 徐工集团徐州液压附件厂 Xuzhou Hydraulic Parts Co., Ltd. XCMG
20	垂直油缸 Jack cylinder	XCT55.69	徐州徐工液压件有限公司 Xuzhou Hydraulic Parts Co., Ltd. XCMG

注意事项

Notes

1. 表中额定总起重量值，是在平整的坚固地面上本起重机能够保证的最大总起重量，包括吊钩和吊具的重量，所以为了估算重物重量，必须减去上述的装置重量。
2. 表中的工作幅度为起吊重物离地时起重物到起重机回转轴线的水平距离，是包括起重臂变形量在内的实际值，因而起吊前应考虑起重臂变形量。
3. 只允许在5级(瞬时风速14.1m/s，风压125N/m²)风以下进行作业。
4. 吊重前操作者必须对物体的重量和工作范围了解后选择合适的作业工况，严禁超出表中的数值。幅度及臂长在相邻两个数值之间时，应依据两个数值中较小值确定起重作业。
5. 应按主臂仰角范围作业，即使是空载，也不应使主臂仰角处于范围外，谨防整机倾翻。
6. 表中的主臂长度应要按照每节臂的伸缩要求进行伸出。

1. The total rated loads given in the rated load charts are the maximum lifting capacity when the crane is set up on firm and level ground, which includes the weight of the hook block and slings. The weight of above-mentioned devices should be deducted to correctly calculate the load weight.
2. The working radius shown in the rated load charts is the radius when the load is lifted off the ground, and it is the actual value including loaded boom deflection.
3. A lifting operation is permissible only when the wind force is below grade 5 (instantaneous wind speed is 14.1 m/s, wind pressure is 125 N/m²).
4. Before beginning lifting operation, the operator should know the weight of the load to be lifted and its working range, and then select proper working conditions. Never operate the crane beyond the limit shown in the chart. Use the lower value from the chart when the boom length or working radius is between the range of values.
5. Observe the boom angle limit. Never operate the crane with the boom angle beyond the recommended limit even if a load is not being carried. Otherwise, the crane will tip.
6. The boom length given in the rated load charts should accord with the telescoping code of boom sections .